

Prime numbers less than 50

2	3	5	7	11	13	17	19	23	29	31	37	41	43	47
---	---	---	---	----	----	----	----	----	----	----	----	----	----	----

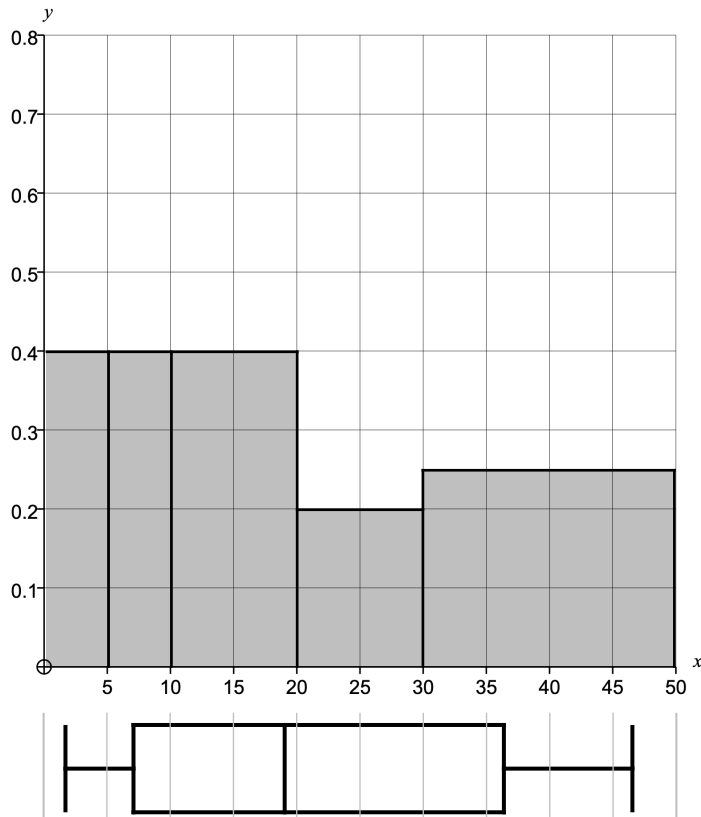
Group	Frequency	Cumulative Frequency	Class Width	Frequency Density	Midpoint	F × M
$0 \leq n < 5$	2	2	5	0.4	2.5	5
$5 \leq n < 10$	2	4	5	0.4	7.5	15
$10 \leq n < 20$	4	8	10	0.4	15	60
$20 \leq n < 30$	2	10	10	0.2	25	50
$30 \leq n < 50$	5	15	20	0.25	40	200
						330

Mean	21.87
Median	19
Range	45

Lower Quartile	7
Upper Quartile	37
Interquartile Range	30

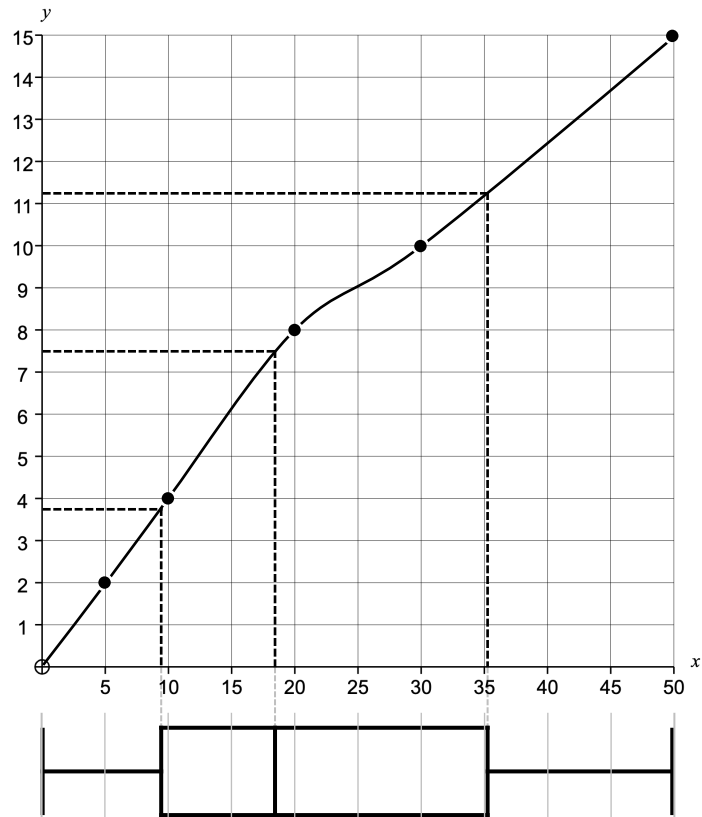
Estimated Mean	22
Modal Class	$30 \leq n < 50$
Median Class	$10 \leq n < 20$

Histogram



Actual Box Plot

Cumulative Frequency



Estimated Box Plot

First 10 Fibonacci numbers

1	1	2							55
---	---	---	--	--	--	--	--	--	----

Group	Frequency	Cumulative Frequency	Class Width	Frequency Density	Midpoint	F × M
$0 \leq n < 5$						
$5 \leq n < 10$						
$10 \leq n < 20$						
$20 \leq n < 40$						
$40 \leq n < 80$						

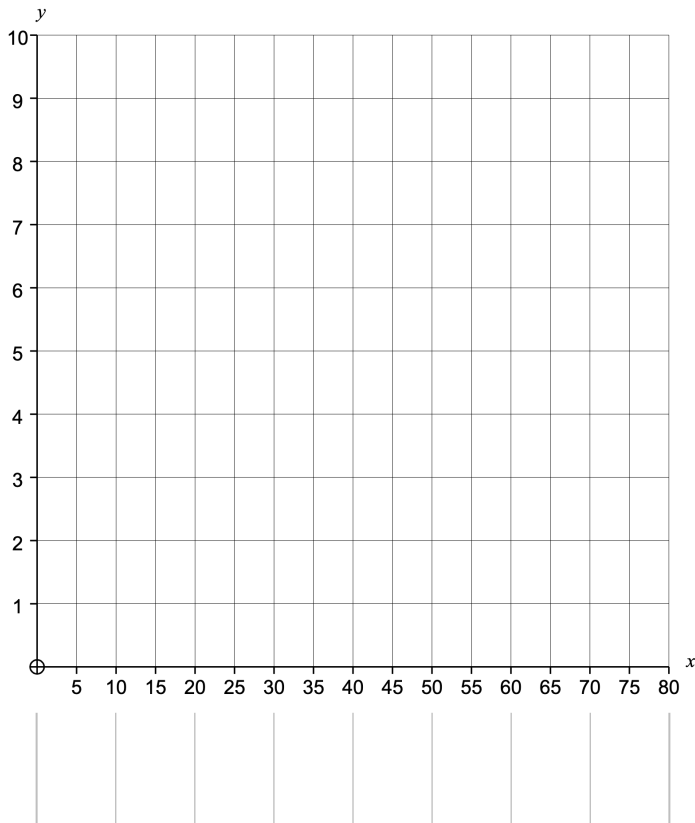
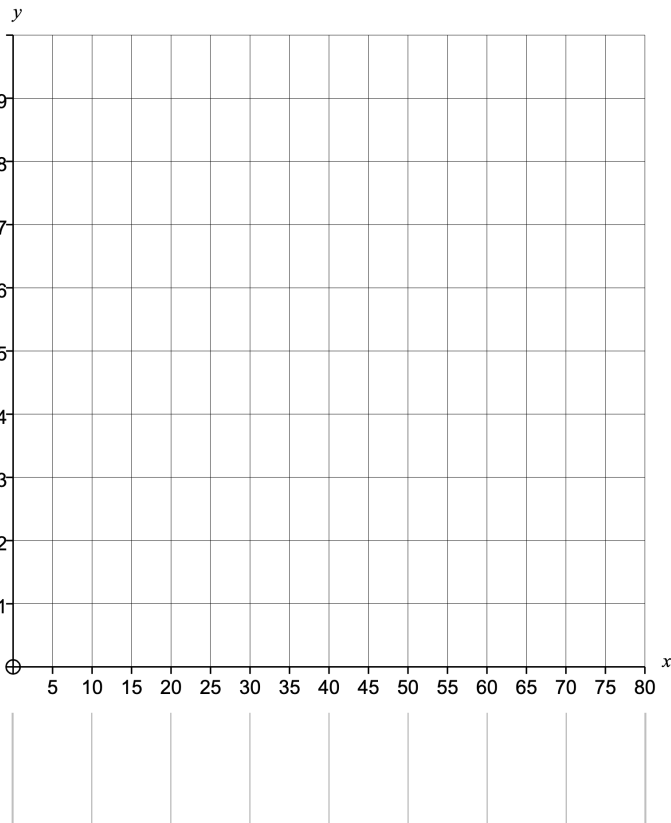
Mean	
Median	
Range	

Lower Quartile	
Upper Quartile	
Interquartile Range	

Estimated Mean	
Modal Class	
Median Class	

Histogram

Cumulative Frequency



Actual Box Plot

Estimated Box Plot

First 10 Fibonacci numbers

1	1	2	3	5	8	13	21	34	55
---	---	---	---	---	---	----	----	----	----

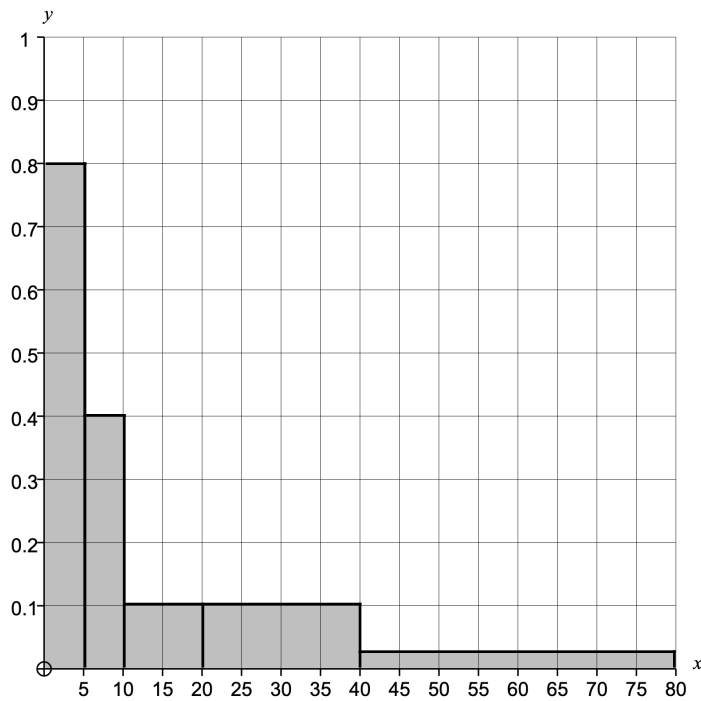
Group	Frequency	Cumulative Frequency	Class Width	Frequency Density	Midpoint	F × M	
$0 \leq n < 5$	4	4	5	0.8	2.5	10	
$5 \leq n < 10$	2	6	5	0.4	7.5	15	
$10 \leq n < 20$	1	7	10	0.1	15	15	
$20 \leq n < 40$	2	9	20	0.1	30	60	
$40 \leq n < 80$	1	10	40	0.025	60	60	
<table border="1" style="width: 100%; border-collapse: collapse;"> <tr> <td style="width: 50%; text-align: center;">10</td> <td style="width: 50%; text-align: center;">160</td> </tr> </table>						10	160
10	160						

Mean	14.3
Median	6.5
Range	54

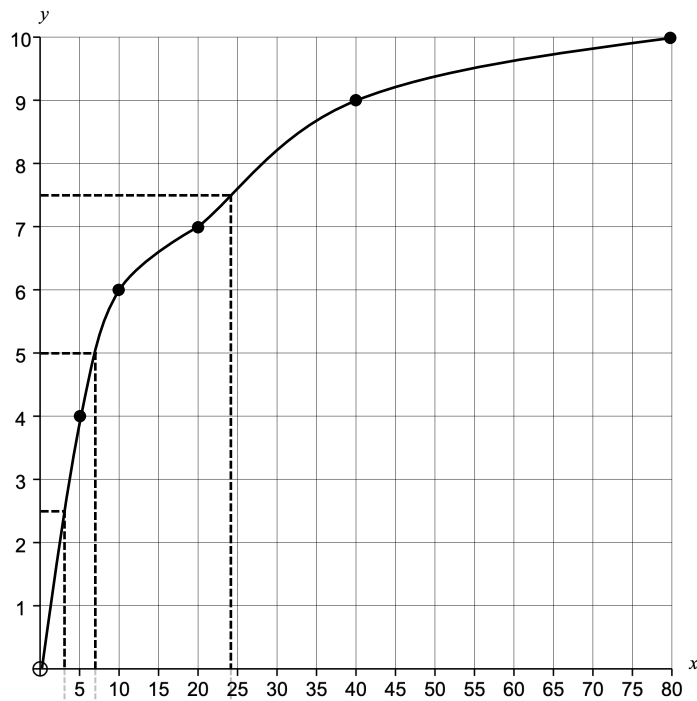
Lower Quartile	2
Upper Quartile	21
Interquartile Range	19

Estimated Mean	16
Modal Class	$0 \leq n < 5$
Median Class	$5 \leq n < 10$

Histogram



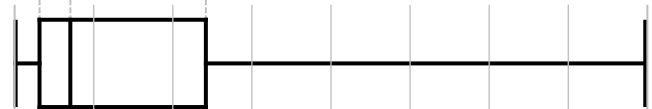
Cumulative Frequency



Actual Box Plot



Estimated Box Plot



Interior angles of regular polygons from triangles – pentadecagons (15 sides)

60° **156°**

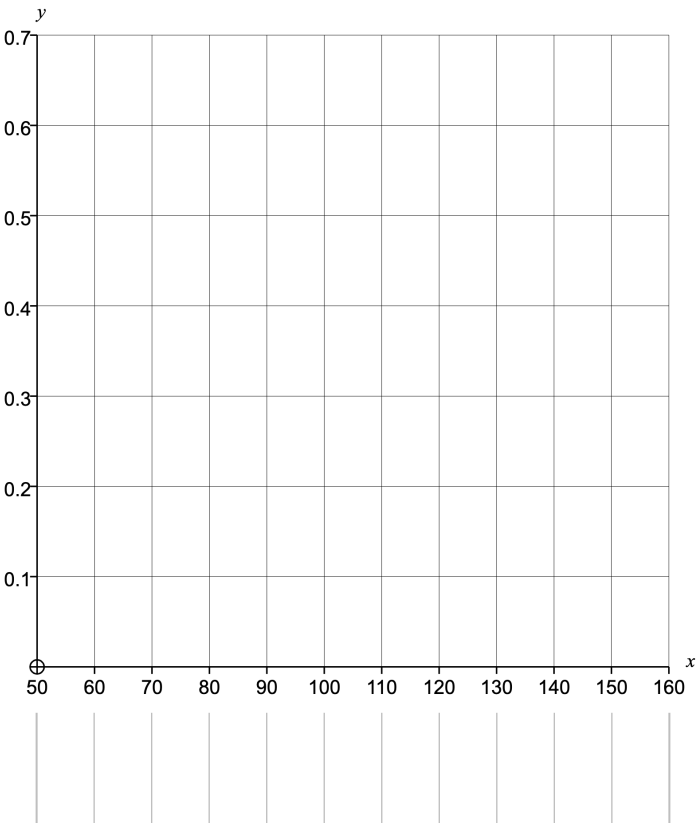
Group	Frequency	Cumulative Frequency	Class Width	Frequency Density	Midpoint	F × M
$50^\circ \leq x < 100^\circ$						
$100^\circ \leq x < 125^\circ$						
$125^\circ \leq x < 145^\circ$						
$145^\circ \leq x < 155^\circ$						
$155^\circ \leq x < 160^\circ$						

Mean	
Median	
Range	

Lower Quartile	
Upper Quartile	
Interquartile Range	

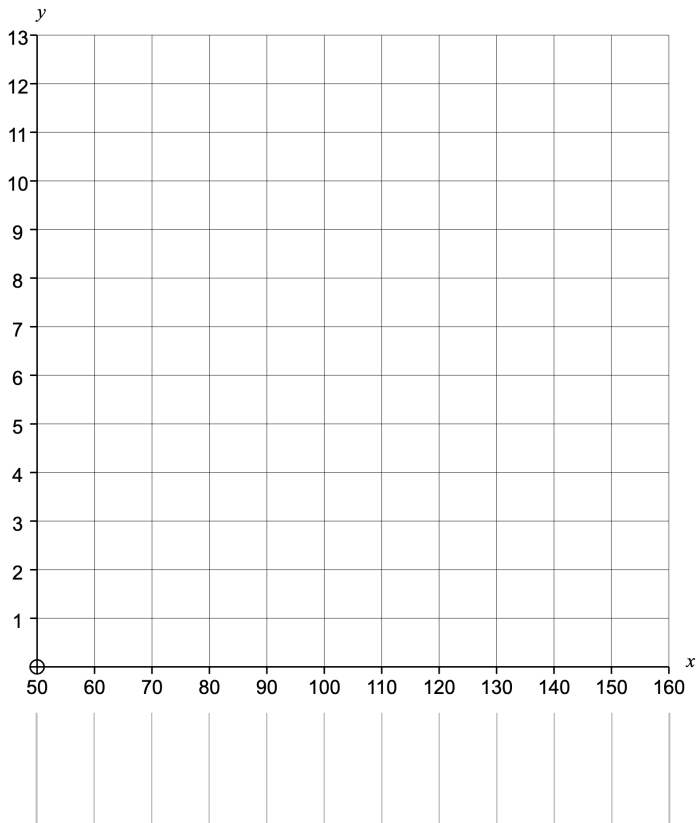
Estimated Mean	
Modal Class	
Median Class	

Histogram



Actual Box Plot

Cumulative Frequency



Estimated Box Plot

Interior angles of regular polygons from triangles – pentadecagons (15 sides)

60° 90° 108° 120° 128.6° 135° 140° 144° 147.3° 150° 152.3° 154.3° 156°

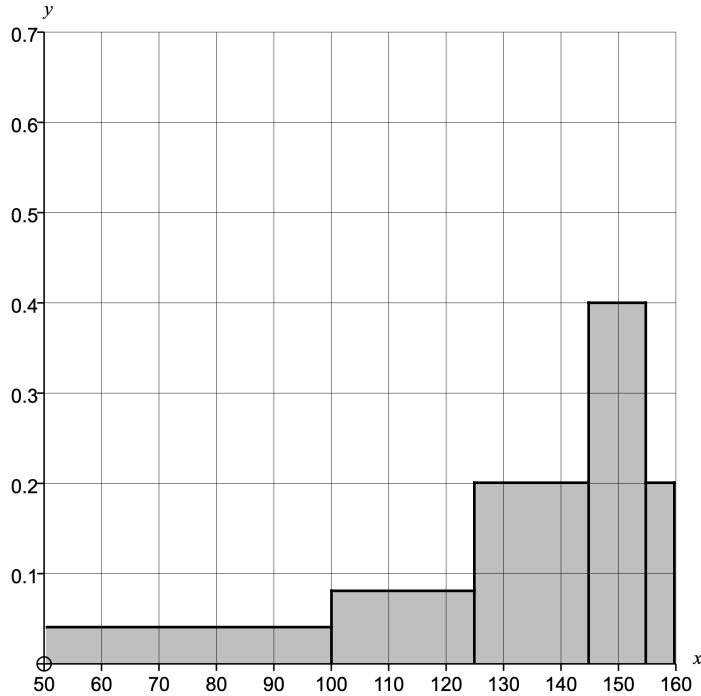
Group	Frequency	Cumulative Frequency	Class Width	Frequency Density	Midpoint	F × M
$50^\circ \leq x < 100^\circ$	2	2	50	0.04	75	150
$100^\circ \leq x < 125^\circ$	2	4	25	0.08	112.5	225
$125^\circ \leq x < 145^\circ$	4	8	20	0.2	135	540
$145^\circ \leq x < 155^\circ$	4	12	10	0.4	150	600
$155^\circ \leq x < 160^\circ$	1	13	5	0.2	157.5	157.5
						1672.5
						13

Mean	129.7°
Median	140°
Range	96°

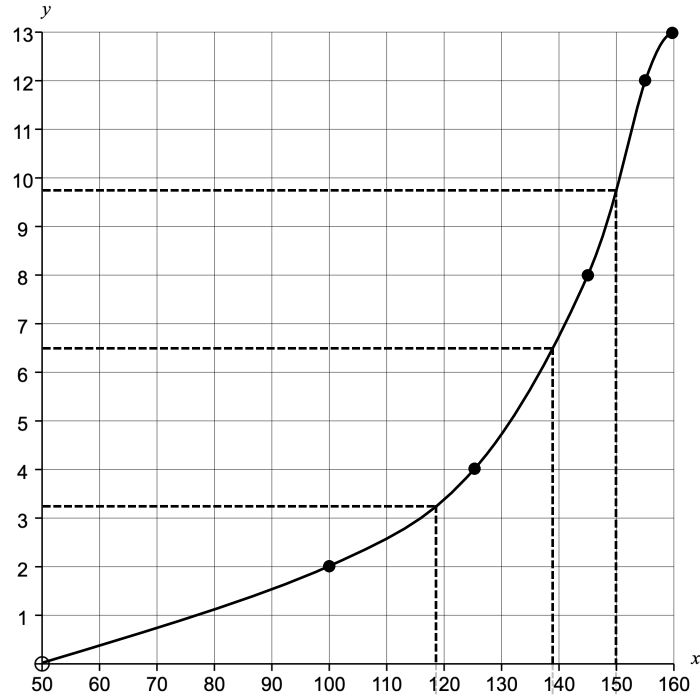
Lower Quartile	114°
Upper Quartile	151.2°
Interquartile Range	37.2°

Estimated Mean	128.7°
Modal Class	—
Median Class	$125^\circ \leq x < 145^\circ$

Histogram



Cumulative Frequency



Actual Box Plot

Estimated Box Plot

Factors of 48

1									48
---	--	--	--	--	--	--	--	--	----

Group	Frequency	Cumulative Frequency	Class Width	Frequency Density	Midpoint	F × M
$0 \leq n < 5$						
$5 \leq n < 10$						
$10 \leq n < 20$						
$20 \leq n < 30$						
$30 \leq n < 50$						

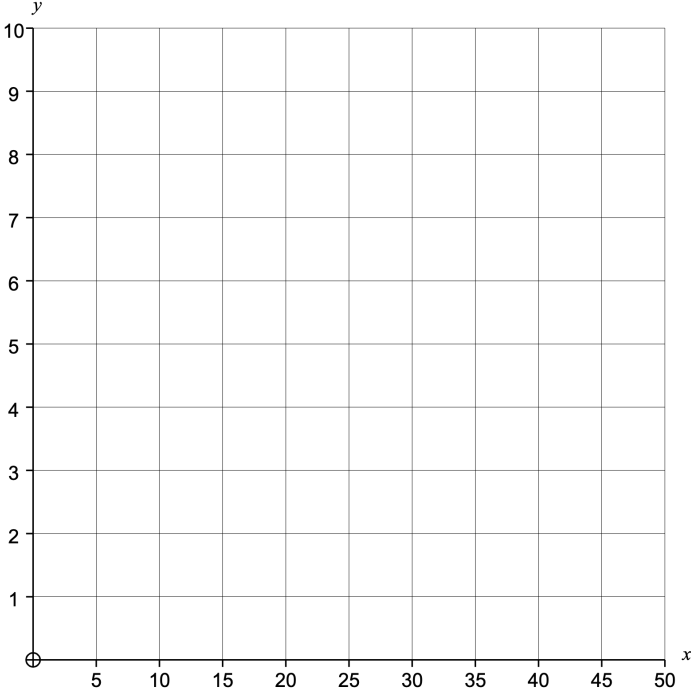
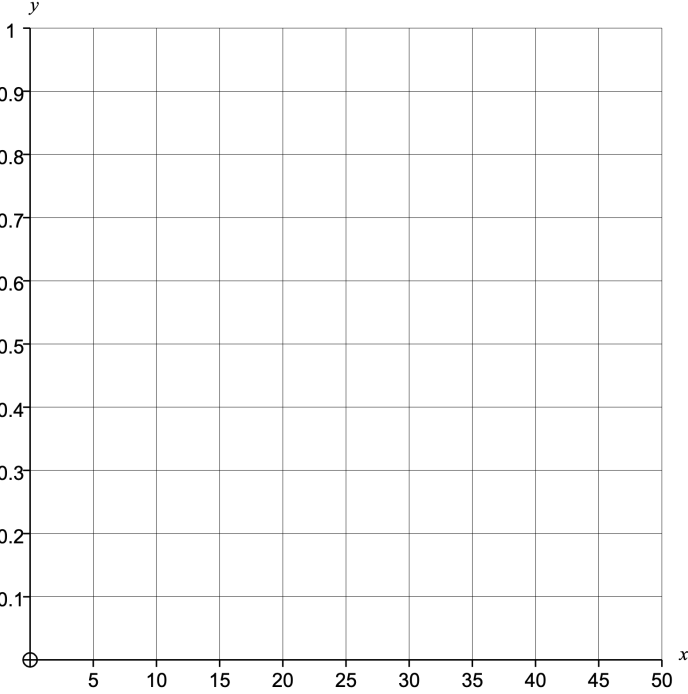
Mean	
Median	
Range	

Lower Quartile	
Upper Quartile	
Interquartile Range	

Estimated Mean	
Modal Class	
Median Class	

Histogram

Cumulative Frequency



Actual Box Plot

Estimated Box Plot

Factors of 48

1	2	3	4	6	8	12	16	24	48
---	---	---	---	---	---	----	----	----	----

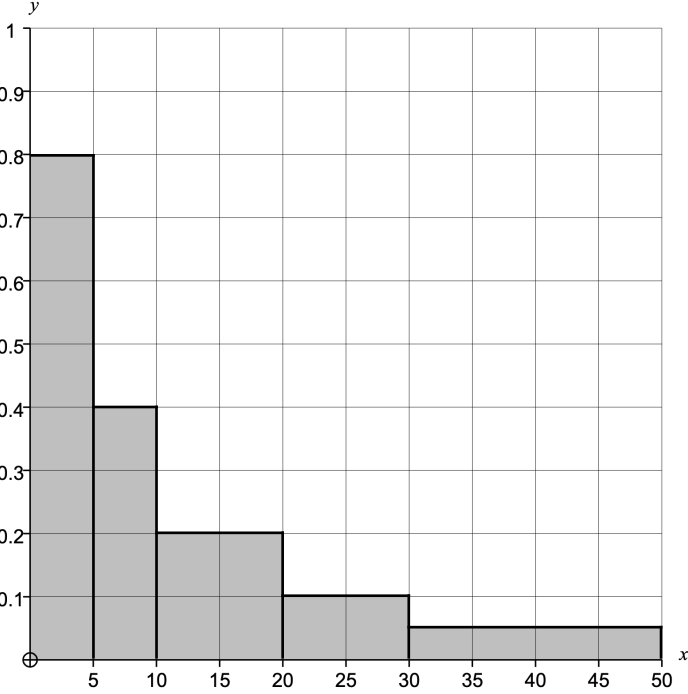
Group	Frequency	Cumulative Frequency	Class Width	Frequency Density	Midpoint	F × M	
$0 \leq n < 5$	4	4	5	0.8	2.5	10	
$5 \leq n < 10$	2	6	5	0.4	7.5	15	
$10 \leq n < 20$	2	8	10	0.2	15	30	
$20 \leq n < 30$	1	9	10	0.1	25	25	
$30 \leq n < 50$	1	10	20	0.05	40	40	
10							120

Mean	12.4
Median	7
Range	47

Lower Quartile	3
Upper Quartile	16
Interquartile Range	13

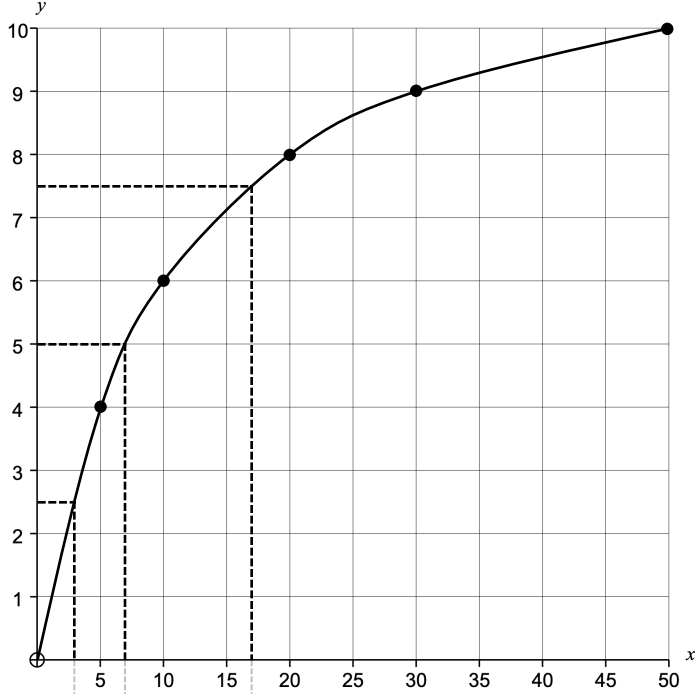
Estimated Mean	12
Modal Class	$0 \leq n < 5$
Median Class	$5 \leq n < 10$

Histogram



Actual Box Plot

Cumulative Frequency



Estimated Box Plot

sin 0°, sin 10°, ..., sin 90°

0	0.17								
---	------	--	--	--	--	--	--	--	--

Group	Frequency	Cumulative Frequency	Class Width	Frequency Density	Midpoint	F × M
$0 \leq n < 0.25$						
$0.25 \leq n < 0.5$						
$0.5 \leq n < 0.7$						
$0.7 \leq n < 0.9$						
$0.9 \leq n \leq 1$						

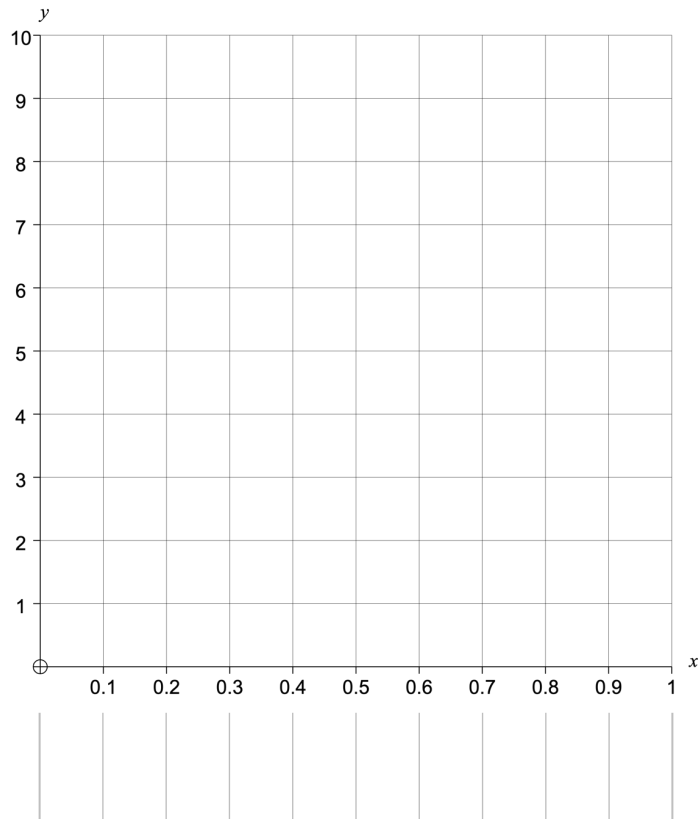
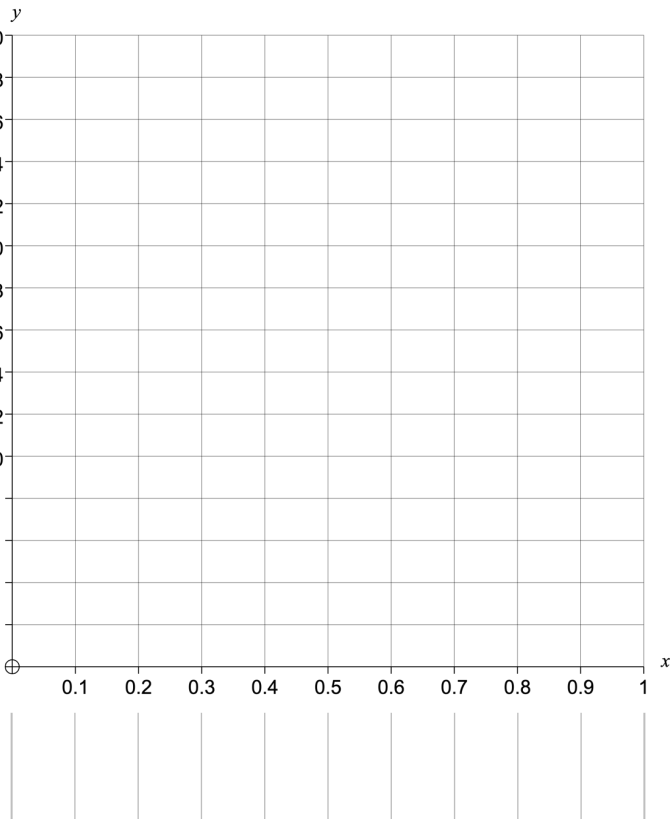
Mean	
Median	
Range	

Lower Quartile	
Upper Quartile	
Interquartile Range	

Estimated Mean	
Modal Class	
Median Class	

Histogram

Cumulative Frequency



Actual Box Plot

Estimated Box Plot

sin 0°, sin 10°, ..., sin 90°

0	0.17	0.34	0.5	0.64	0.77	0.87	0.94	0.98	1
---	------	------	-----	------	------	------	------	------	---

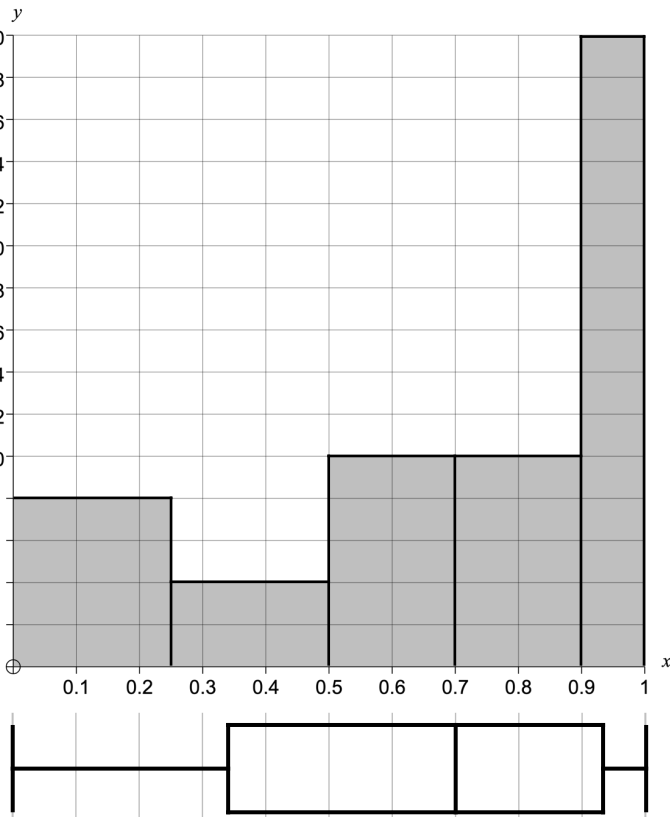
Group	Frequency	Cumulative Frequency	Class Width	Frequency Density	Midpoint	F × M		
$0 \leq n < 0.25$	2	2	0.25	8	0.125	0.25		
$0.25 \leq n < 0.5$	1	3	0.25	4	0.375	0.375		
$0.5 \leq n < 0.7$	2	5	0.2	10	0.6	1.2		
$0.7 \leq n < 0.9$	2	7	0.2	10	0.8	1.6		
$0.9 \leq n \leq 1$	3	10	0.1	30	0.95	2.85		
<table border="1" style="width: 100%; border-collapse: collapse;"> <tr> <td style="width: 50%; text-align: center; padding: 5px;">10</td> <td style="width: 50%; text-align: center; padding: 5px;">6.275</td> </tr> </table>						10	6.275	
10	6.275							

Mean	0.62
Median	0.70
Range	1

Lower Quartile	0.34
Upper Quartile	0.94
Interquartile Range	0.60

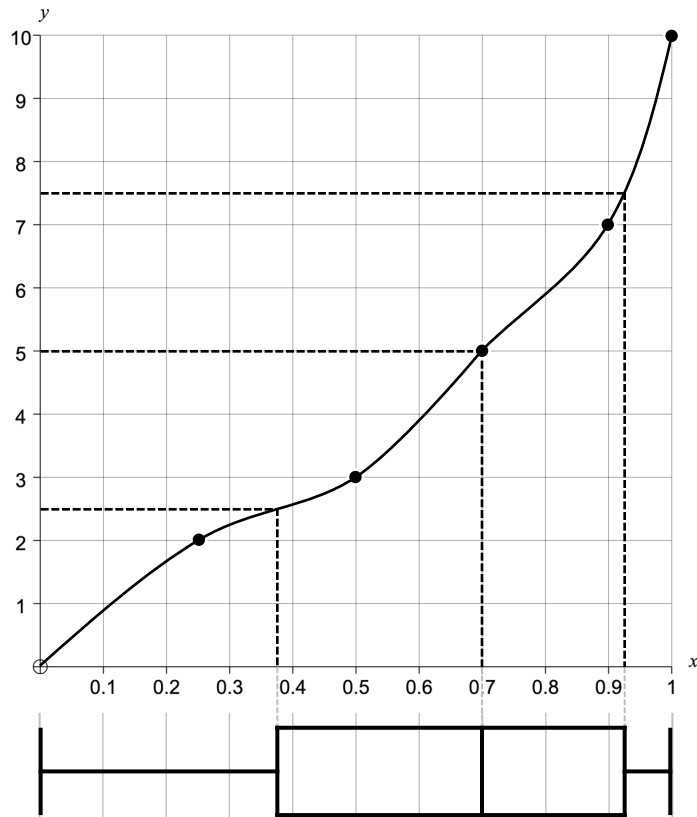
Estimated Mean	0.6275
Modal Class	$0.9 \leq n \leq 1$
Median Class	$0.7 \leq n < 0.9$

Histogram



Actual Box Plot

Cumulative Frequency



Estimated Box Plot

£10, with 14% compound interest after 1-10 years

£11.40

£37.07

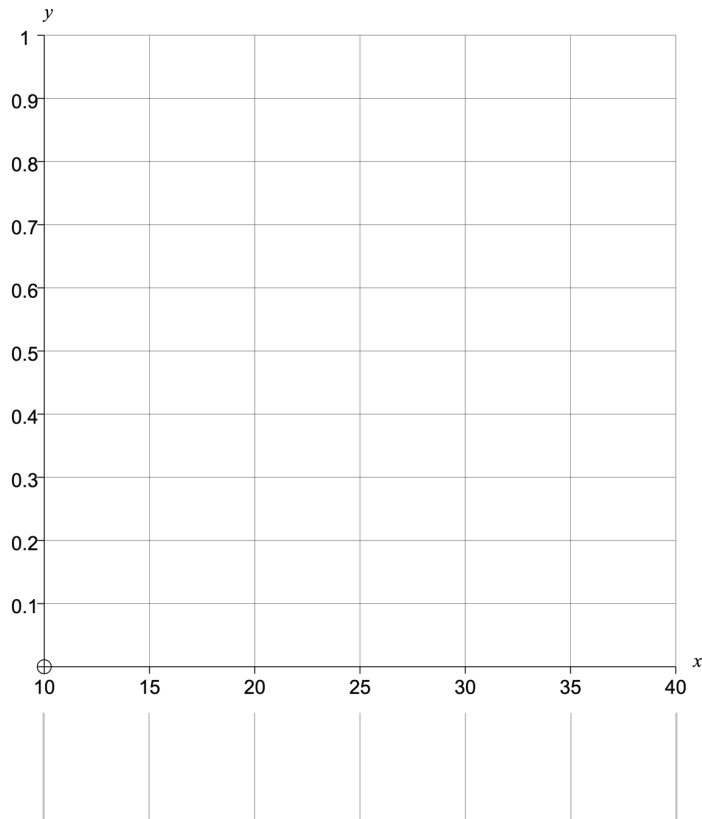
Group	Frequency	Cumulative Frequency	Class Width	Frequency Density	Midpoint	F × M
$£10 \leq n < £15$						
$£15 \leq n < £20$						
$£20 \leq n < £25$						
$£25 \leq n < £30$						
$£30 \leq n < £40$						

Mean	
Median	
Range	

Lower Quartile	
Upper Quartile	
Interquartile Range	

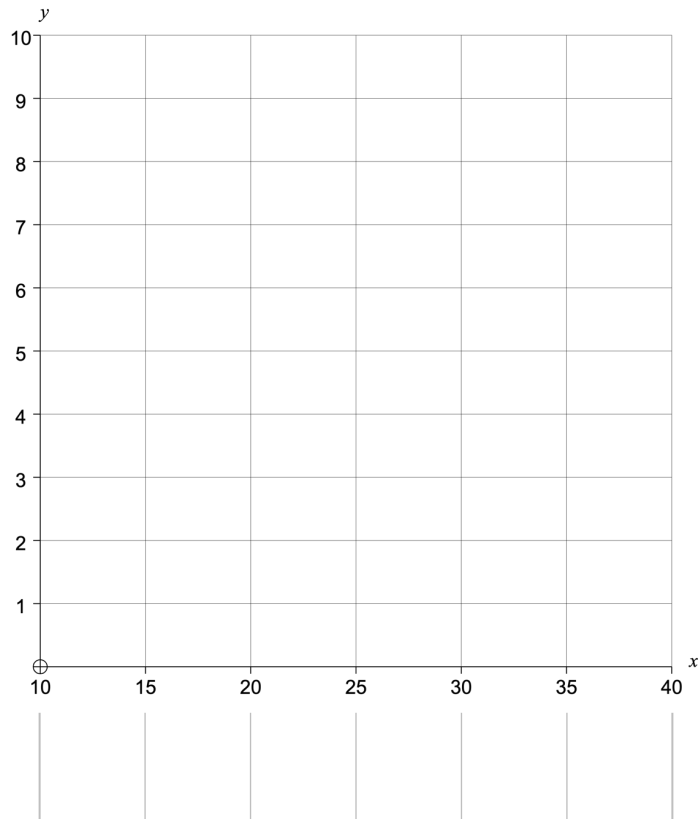
Estimated Mean	
Modal Class	
Median Class	

Histogram



Actual Box Plot

Cumulative Frequency



Estimated Box Plot

£10, with 14% compound interest after 1-10 years

£11.40	£13.00	£14.82	£16.89	£19.25	£21.95	£25.02	£28.53	£32.52	£37.07
--------	--------	--------	--------	--------	--------	--------	--------	--------	--------

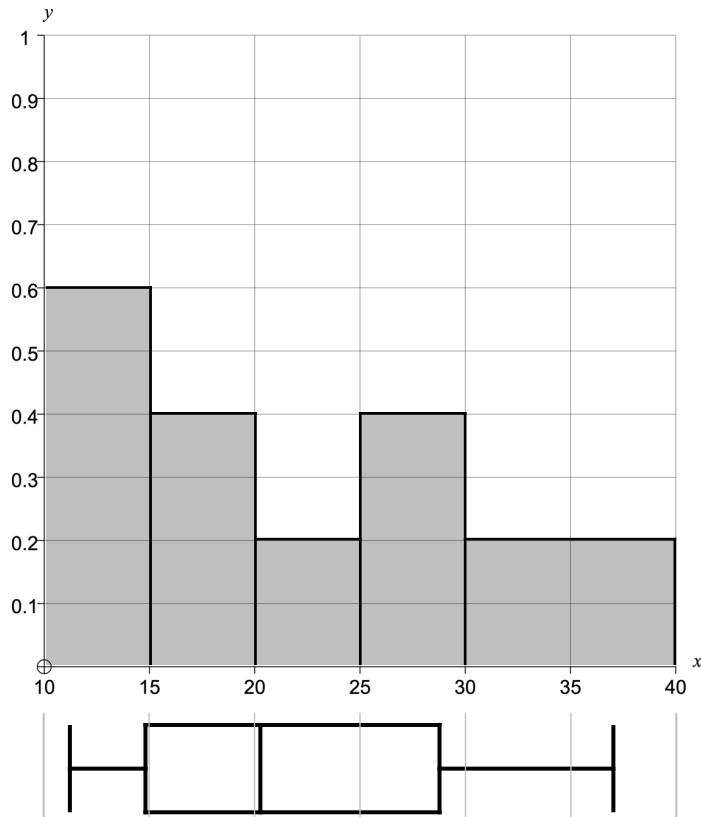
Group	Frequency	Cumulative Frequency	Class Width	Frequency Density	Midpoint	F × M
$£10 \leq n < £15$	3	3	5	0.6	12.5	37.5
$£15 \leq n < £20$	2	5	5	0.4	17.5	35
$£20 \leq n < £25$	1	6	5	0.2	22.5	22.5
$£25 \leq n < £30$	2	8	5	0.4	27.5	55
$£30 \leq n < £40$	2	10	10	0.2	35	70
10						220

Mean	£22.04
Median	£20.60
Range	£25.67

Lower Quartile	£14.82
Upper Quartile	£28.53
Interquartile Range	£13.71

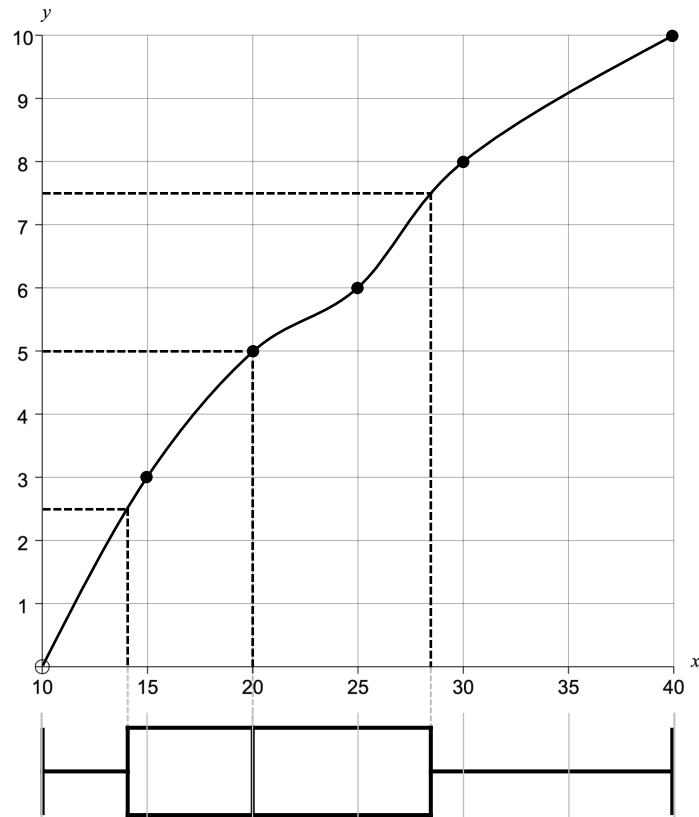
Estimated Mean	£22
Modal Class	$£10 \leq n < £15$
Median Class	$£20 \leq n < £25$

Histogram



Actual Box Plot

Cumulative Frequency



Estimated Box Plot